

RYMAN ARTS
FOUNDATION
Fall 2017

CLASS: Foundation Drawing

Day: Saturday

Location: Cal State University Fullerton/VA building

Instructor: Sergio A. Rebia

Email: sergiorebia@yahoo.com

Description:

This course is an introduction to observational drawing and composition to develop the ability to perceive and define shape, contour, volume, space, and light using a variety of drawing media and subject matter. Emphasis is on clarity of observation and the ability to order and translate 3-dimensional form and space onto a 2-dimensional drawing.

Course Objectives:

1. Develop visual perception as it pertains to translating 3D form on a 2D surface.
2. Develop manual dexterity and eye-hand coordination in the practice of drawing.
3. Accurately represent form and volume both simple and complex using observation in a spatial context.
4. Develop proficiency and awareness in composition as it pertains to drawing.
5. Develop proficiency in the use of line, value, shape and surface texture as it pertains to light logic.
6. Develop an aesthetic for preparing and presenting the required work neatly in a portfolio.

Class Structure:

This is primarily a hands-on studio course providing the student with weekly drawing problems and practice. Class work will consist of critiques, warm up exercises, and longer sustained drawings from observation. Drawing from observation is manifested with the class working from still-life materials and set-ups. This structure is rigorous and encourages skill building through practice and repetition. Class-work will be supplemented with lectures and demonstrations.

Homework:

There will be regularly assigned homework drawing projects and exercises having specific due dates when work is reviewed and/or submitted for evaluation. All drawings must be treated with care and respect and submitted neatly for revisions and final critique. Be prepared to draw for at least three to six hours per week outside of class for successful completion of all drawing assignments.

Participation:

It is essential that you come prepared for class (bringing required materials and any work due); have a positive attitude along with an open mind. Be actively engaged in learning (drawing, listening, and observing) as well as participating in critiques, discussions and studio maintenance (setting up, sharing space with peers, and clean up).

Sketchbook:

Your sketchbook will serve as a visual diary with weekly entries and must include:

- Class notes.
- Preparatory studies/sketches for sustained drawings.
- Consistent daily practice of material and concepts introduced in class with an emphasis on observation based drawing.
- You shall not supplement the sketchbook with assignments.

Grading:

There is no grading at Ryman Arts, **BUT please complete your class work and home work projects as if your grade depended on it, for your artistic benefit and growth.**

Attendance:

This is extremely important for success in the course. Roll will be taken at the start of each class period. It is essential to attend all classes, arrive on time and remain working the entire period. If you arrive late, it is your responsibility to verify that you are marked present. **IMPORTANT NOTE: In accordance with Ryman Arts Policy, you will be dropped from the program on your third absence. Please do everything in your power to avoid this. Thank you.**

Classroom Etiquette:

- 1 Make yourself available to be helped as well as to help others
- 2 Turn off all cell phones and headsets. If headsets will be used please make sure they are on a low volume setting.
- 3 Remain in “non-verbal mode” during drawing activities
- 4 Return tables/easels/drawing horses to designated area at the end of class
- 5 Clean up after yourself at the end of class and help maintain a clean studio

Materials List

12" PLASTIC RULER
SOFT VINE CHARCOAL
ARTIST CLIP BOARD 20 X 26
PRISMACOLOR PENCIL SET 12 CLR
PRESSED CHARCOAL STICK
PEEL OFF CHARCOAL PENCIL / HARD
PEEL OFF CHARCOAL PENCIL / MED
PEEL OFF CHARCOAL PENCIL / SOFT
EAGLE PENCIL / 2B
EAGLE PENCIL / 6B
EAGLE PENCIL / HB
CONTE CRAYON WHITE HB
CONTE CRAYON BLACK 2B
CONTE CRAYON 2CARD
MAGIC RUB ERASER (RECTANGULAR)
SANDPAPER PAD
#5 BLENDING STUMP
KNEADED ERASER
PENCIL SHARPNER
ART BIN 1-TRAY
CLASSIC WIRE SKETCH BK 7 X 10

Available to your class as needed: Newsprint, additional sketch paper, Canson grey paper

Semester Schedule

8/19/17

1st Day of Class/Orientation

(IMPORTANT NOTE: STUDENTS WILL NEED TONED PAPER TODAY FOR CLASS WORK & HOME WORK!)

In Class:

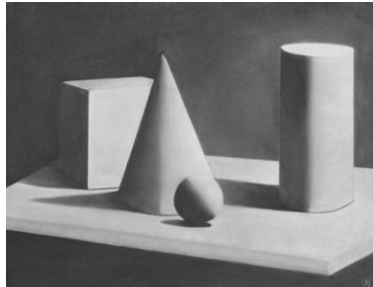
- Class will be choosing between two different levels of still-life setups.
- Sighting and construction drawing lecture **on toned paper**. Construct the in-class still-life using the sighting method, proportional measurements and relative measurements
- Start the still-life construction in vine charcoal after lecture and demo.

Home Work:

- Set up a still-life at home that is at your level, light it with spot light and construct the still-life from observation using the sighting method, proportional measurements and relative measurements that you learned about in class on **(Canson mid tone grey charcoal paper)**
- Look up “Professor Rebia’s Black & White Charcoal Demo” on YouTube to start getting an idea of how to add value to the still-life objects on tone paper.

Link: <https://www.youtube.com/watch?v=nkhYZBHyXz8>

Ex.



8/26/17 (IMPORTANT NOTE: 9/2/17 – Labor Day Weekend, No Class!)

In Class:

- Learn how to draw with black and white charcoal on **Canson mid-tone grey charcoal paper**.
- You will learn about texture & line as it pertains to surface detail and refining edges in drawing and rendering.
- Continue drawing the still-life in class until complete.

Home Work:

- Continue drawing the still-life for homework until complete.

9/9/17

In Class:

- Continue drawing the still-life in class until complete.
- Introduce demo video for figure construction.

Home Work:

- Continue drawing the still-life for homework until complete.
- Watch demo videos: “The Figure” and “The Figure 2” on YouTube to start getting an idea of what we will do next week. You can find both videos by typing in: Sergio Rebia, on the YouTube search.

Link to “Professor Rebia’s Portrait Drawing Demo in Black & White Charcoal”:

<https://www.youtube.com/watch?v=YxuYdV2grMA&t=6s>

Link to “The Figure”: <https://www.youtube.com/watch?v=Ayya2tnINZs&t=44s>

Link to “The Figure 2”: https://www.youtube.com/watch?v=9_gQ9SnqXJI&t=33s

9/16/17

In Class:

- Lecture and Demo.
- Introduction to figure construction.
- Introduction to portrait construction.
- We shall try to set up the three week extended pose, pass out toned paper, mark spots, and start fig. construction

Home Work: (9/16—10/14)

-Two Self-portraits fully rendered in black and white charcoal. **One portrait per half sheet of toned paper.** In other words, two self portraits should fit on one whole sheet of toned paper.

-Portrait should be in $\frac{3}{4}$ pose with a 2 o'clock or 10 o'clock lighting position in order to cast hard shadows.

-Wear something interesting, (ex. hat, glasses, face paint, headdress, shirt, scarf, etc.)

-Face should not be covered in any way, but may include hand.

-Also, try to portray two opposing emotions in each portrait. Ex. Happy vs. Sad, Neutral vs. Angry, etc.

(Canson mid tone grey charcoal paper)

-Please note: you will have from 9/16 to 10/14 to work on these portraits.



Ex.

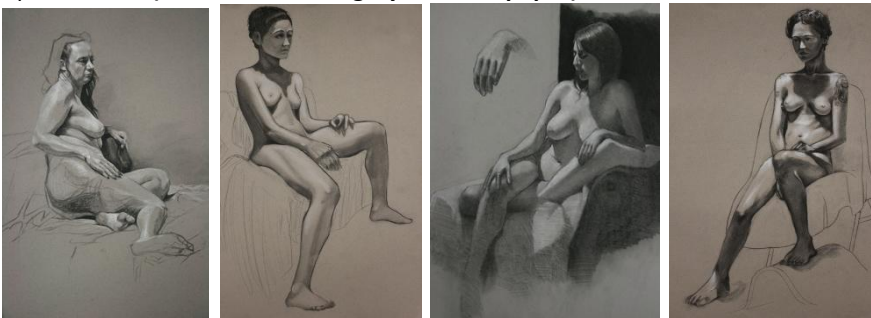
9/23/17

In Class:

-Three week extended figure drawing from observation on **(Canson mid tone grey charcoal paper)**

Home Work:

-Self-portraits on **(Canson mid tone grey charcoal paper)**



Ex.

9/30/17 (IMPORTANT NOTE: 10/7/17 – No Class, Make Your Mark in the Park)

In Class:

-Continue three week extended figure drawing from observation on **(Canson mid tone grey charcoal paper)**

Home Work:

-Continue self-portraits on **(Canson mid tone grey charcoal paper)**

10/8/17

Make Your Mark in the Park – field trip to Grand Park

Make your Mark in the Park Assignment: **Landscape Drawings**



10/14/17

In Class:

-Continue and finish three week extended figure drawing from observation on **(Canson mid tone grey charcoal paper)**

Home Work:

-Continue and finish self-portraits on **(Canson mid tone grey charcoal paper)**

-Start watching Professor Rebia's YouTube demo videos to get an idea of the final project.

Link to "Self Portrait Drawing In Color Pencil Demo": <https://www.youtube.com/watch?v=yz3y3gyqPqg>

Link to "Color Pencil Portrait": <https://www.youtube.com/watch?v=VDCeAFO3DAU&t=35s>

-E-mail me pictures for final portraits and remember to follow the same guidelines as the previous portraits.

10/21/17

In Class:

-Students who did not take pictures and e-mail them to me for approval will need to take pictures in class using the lighting arrangement that will be set up in class.

-Introduction to: the color wheel, color mixing and layering with color pencils.

-Demo on how to layer and mix flesh tone with 12 set of color pencils.

-Start of final project: Half sheet of toned paper **(Canson mid tone grey charcoal paper)** full color drawing of self portrait from photographic reference with color pencils. **(Students will complete two different color pencil self-portraits by the end of the semester illustrating two different emotions, ex: happy/sad, angry/neutral, etc.)**

Home Work:

-Continue working on final project: full color drawing of self portrait from photographic reference with color pencils.



Ex.

10/28/17

In Class:

-Continue working on final project: full color drawing of self portrait from photographic reference with color pencils.

Home Work:

-Continue working on final project: full color drawing of self portrait from photographic reference with color pencils.

11/4/17

In Class:

-Continue working on final project: full color drawing of self portrait from photographic reference with color pencils.

Home Work:

-Continue working on final project: full color drawing of self portrait from photographic reference with color pencils.

11/11/17

In Class:

Final day of class!!!

Final critique

