

# sketchbook



Students from over 150 zip codes and a variety of backgrounds learn together with a shared passion for art making.

## Building on Expansion Momentum: Outreach Numbers Soar

**Our outreach initiative, *Drawing More to Art*, has dramatically increased outreach efforts in Los Angeles and new Orange County communities.**

Now that we have the capacity, we are introducing Ryman Arts to more talented young people for whom the Ryman Arts experience can make a profound difference. Developing strong relationships with educators, community leaders, and high schools, especially in low-income communities, is integral to our mission.

Says teacher Stephen Arnold of Frederick Douglass Academy Charter High School in Los Angeles, *Witnessing a student being accepted and graduating from Ryman Arts is like watching them transition from high school to college or teen to adult. It also transforms their parents to the realization that their son or daughter can and does have a future in the arts. Ryman is an inspiration and starting point, especially for students of the inner city, for realizing their potential not just in the arts, but college in general.*

Our efforts are yielding strong results. In Fall 2013 we had 84 classroom presentations at Southern California high schools and reached 2,570 students. This recent Spring semester, we

presented to an additional 1,622 students. That is almost a 50% increase over the school year before. All of the presentations are made by Ryman Arts alumni who share their personal experience, introduce the array of career options in art, and offer tips for a successful application.

Along with in-school presentations, we are expanding our reach with teacher workshops, *Big Draw LA* drawing workshops, and participation in Art Walks and community festivals. Now, students are coming to Ryman Arts from six counties and over 150 zip codes. With your help, we aim to continue building on this momentum—raising awareness by the thousands among high school youth, school partners, and new supporters in Southern California.



Through *Drawing More to Art*, Ryman Arts has been fortunate to work with dedicated art teachers such as Stephen Arnold, pictured here with alumnus Wesley Gilmore.

# The Big Draw LA is Underway and Increasing Outreach!

Participants engage in a Big Draw LA thaumatrope activity at Grand Central Art Center.



## Our fifth year of *The Big Draw LA* is in the works.

While *The Big Draw LA* is a celebration that takes place during October, our ongoing efforts raise awareness for the value of drawing in our communities year-round. We are training dozens of Ryman Arts alumni to serve as workshop artists and ambassadors for *The Big Draw LA*. From the **Los Angeles Environmental Education Fair** to **Artworx LA** and the **Downtown Bookfest**, we have had an active presence at numerous community events. Hosting pre-October workshops encourages attendees to develop their own participatory drawing events for *The Big Draw LA 2014*.

## Says Big Draw LA Coordinator, Justin McInteer:

*"There's nothing better than watching workshop attendees rediscover the joy of drawing. Bringing The Big Draw LA workshops to communities in Southern California helps demonstrate that The Big Draw LA is for everyone, regardless of background or skill. These small Big Draw LA workshops help build a more communal neighborhood."*

## Coming Up Soon:

- Chinatown Summer Nights:  
Aug 9, 5 pm - midnight
- Third Thursdays in Canoga Park  
at 11:11 A Creative Collective:  
Aug 21

**Special Thanks:** This project is presented in partnership with **The James Irvine Foundation** as part of its Exploring Engagement Fund.



## Ryman Arts Alumni Survey

Summer 2013

Conducted and visualized by Angie Bac, Getty Intern for Ryman Arts.



Ryman Arts alumni keep in touch as teaching assistants, workshop artists, volunteers, and interns.

9% were alumni from 1991-1998.  
12% were alumni from 1999-2006.  
79% were alumni from 2007-2013.



The types of work most alumni do:

- 13.7% —Graphic Design
- 11.3% —Illustration
- 11.3% —Arts Education/Administration
- 10.8% —Fine Art
- 2.9% —Animation
- 2.9% —Architecture
- 1.5% —Industrial/Automobile Design

Ryman Arts helped our alumni in the following ways—

- 88% Improved my drawing and/or painting skills
- 80% Built up my self-confidence and self-esteem
- 79% Strengthened my identity as an artist

96% of 2013 alumni pursued a higher education following high school



Alumni involvement with art today—

76.7% are involved in art by visiting museums, galleries, and/or cultural institutions.

29.5% support art organizations by being a member, by donating, or by volunteering.

55.7% reported as being a student taking an art class.

28.1% earn a living in an art-related career.

40.0% continues making art but not as primary employment

26.2% exhibited work at a gallery or a show.



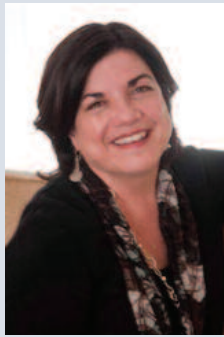
Ryman Arts alumni felt that the program did the following—

- 67.8% provided them practical information about art school and colleges
- 57.0% encourage them to major or minor in art
- 34.1% helped them gain their acceptance into their desired college

They also felt that the program helped them—

- 70.6% become more aware of different art careers
- 69.6% build the confidence and skills to pursue art

# Letter from Diane: Welcome New Board Members



In May, the Ryman Arts Board of Directors elected five new members, who add new energy, expertise, and perspective to our organization. **Amy Glad** is an executive at Pardee Homes and was the Board Chair of the California Building Industry Association.

**Phil Hettema** is the Creative Director for Attractions at DreamWorks Animation and founder of the Hettema Group, a design and production studio. **Barbara Jacobs** is President of World Wide Events and COO of Kinetescape, co-owner of Beautiful Pictures, Inc. and her own special events firm, while also serving as executive member of the Central City Association, the League of Women Voters and other civic organizations. **Eddie Newquist** is EVP and Chief Creative Officer at Global Experience Specialists, a faculty member for the Trade Show Marketing Certification as well as a designer and filmmaker. **Christina Saucedo** (Ryman '05), a graphic designer and former Ryman Teaching Assistant, was elected to the Board as Alumni Representative. All have been long-time supporters of Ryman Arts and we are honored they are stepping up their involvement in this way.

Two Board members stepped off the Board and we offer them our deep appreciation for their many years of service. **Frank Stanek** served since 1994 and was a strong advocate for growing our endowment to sustain our growth. Artist and long-time Dean of the Roski School of Fine Arts at USC **Ruth Weisberg** joined the Board in 2000 as an articulate voice for the importance of our skill-based studio instruction. Both have been instrumental in our growth and maturity as an organization.

Every Ryman Arts Board member makes a commitment to ensure our financial stability, participates in strategic decision making about our mission and direction, holds each other to the highest ethical standard, and serves as ambassadors for Ryman Arts. They do all this as volunteers, on top of their own personal responsibilities. I am very grateful for their service and every student who has ever participated in Ryman Arts has been the beneficiary of their vision.

Thank you,

*Diane*



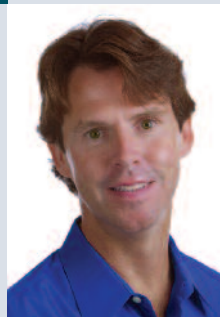
Amy Glad



Phil Hettema



Barbara Jacobs



Eddie Newquist



Christina Saucedo



## Board of Directors

Martin A. Sklar  
*President*  
Charles H. Fry  
*Vice President*  
Robin J. Kalota  
*Treasurer*  
Wayne Hunt  
*Secretary*  
Marshall Nalle Ayers  
Jeff Ganter  
Amy L. Glad  
Phil Hettema  
Barbara Jacobs  
Johnny Lai  
Michelle A. Lund  
Kathy Mangum  
Eddie Newquist  
Edward J. Nowak  
David A. Price  
Bob Rogers  
Christina Saucedo, *Alumni Representative*  
Leah R. Sklar

## Founders

Lucille Ryman Carroll (1906 – 2002)  
Sharon Disney Lund (1936 – 1993)  
Anne Shaw Price (1923 – 2012)  
Harrison A. Price (1921 – 2010)  
Leah R. Sklar  
Martin A. Sklar

Ryman Arts honors the memory of legendary Disney artist Herbert Ryman, and the vision of Lucille Ryman Carroll, by providing high school artists with college-level training in essential skills for art and life.

## Staff

Diane Brigham  
*Executive Director*  
Ginny Kokubun  
*Administrative Coordinator*  
Michelle Lee  
*Development & Communications Manager*  
Walter Marsh  
*Operations Manager*  
Justin McInteer  
*The Big Draw LA Coordinator*  
Frank Rivera  
*Site Coordinator*  
Rebecca Tuynman  
*Education Manager*

## Master Teaching Artists

Kaleeka Bond  
Holly Boruck  
Ichiro Irie  
Marc Kompaneyets  
Michelle Mary Lee  
Mike Nguyen  
Robin Palanker  
Sergio Rebia  
David Schoffman  
Luis Serrano  
Cathy Stone  
Julie Weitz

## Teaching Assistants

Hertz Alegrio (Ryman '09)  
Stephanie Burtner (Ryman '09)  
Arotin Hartounian (Ryman '08)  
Ashley Healy (Ryman '06)  
Ariel McKay (Ryman '09)  
Francisco Palomares (Ryman '07)  
Liana Sposto (Ryman '09)

## To learn more about Ryman Arts, please contact us:

Phone  
213.629.ARTS (2787)  
Website  
[www.rymanarts.org](http://www.rymanarts.org)  
E-mail  
[Info@ryman.org](mailto:Info@ryman.org)  
Mail  
315 West Ninth Street, Suite 806  
Los Angeles, CA 90015-4202

**sketch**  
book

**Sketchbook is published semi-annually by Ryman Arts.**

*Writers*  
Diane Brigham  
Michelle Lee

*Design*  
Marquita Takei

*Photography*  
Debra Morrison



Ryman-Carroll Foundation  
 315 West Ninth Street, Suite 806  
 Los Angeles, CA 90015-4202

NON-PROFIT ORG.  
 U.S. POSTAGE  
 P A I D  
 LOS ANGELES, CA  
 PERMIT NO. 486

*Ryman Arts:  
 teaching young artists.  
 transforming lives.*



Joann Kim

## Dates to Remember...

- June 25:** Student Graduation Ceremony and Art Exhibition Opening Reception at California African American Museum, Los Angeles
- July 16:** Disneyana Fundraising Dinner, Wyndham Anaheim Garden Grove
- July 19:** Student Exhibition at CAAM Closing
- August 16:** Fall 2014 Semester Begins at CSU Fullerton Site
- September 7:** Fall 2014 Semester Begins at Otis Site
- September 20:** *An Affair of the Art*
- October, All Month:** *The Big Draw LA*, various locations
- October 11:** Make Your Mark in Grand Park with Ryman Arts

Call (213) 629-2787  
 for more information.

Look  
 for our website  
 redesign  
 this summer.

Visit [www.rymanarts.org](http://www.rymanarts.org)!  
 The Ryman Arts website is having a complete makeover with new photos, stories, and a blog featuring various Ryman Arts voices.



Miranda Brown